

# Topographic Surveys

**Survey First Ltd produce Topographic Surveys of varying site conditions from small 0.5 hectare gap sites to many hundred hectares for major developments.**

## What is a Topographic Survey?

A topographic survey depicts the topography or shape of the ground of a specified parcel of land and will include all natural and manmade features.

The detail and height information recorded will vary dependent upon the client's specification requirements. Height information varies normally from 5 metre to 20 metre interval dependent upon the scale of the final output.

## What equipment is used?

Survey First Ltd uses the latest Leica 1200 series Electronic Laser Total Stations varying in accuracy from 2 to 5 second for standard topographic surveys.

Using the latest Leica SmartRover GPS (Global Positioning Systems) allows instant access to National Grid Co-ordinates.

Digital levels, distos and laptop computers are standard additional survey equipment allowing surveyors to operate effectively anywhere in the UK and Ireland with digital transmission of data back to our HQ.

Processing is carried out using n4ce and Leica Geo-office survey computation software together with AutoCAD and Microstation ensuring that Survey First can supply digital data to our clients in MX Genio, .DXF/.DWG and .DGN format, 2D & 3D.



For further details contact  
**David Corfield**, Business Development Director

Tel: **01738 829 000**

Fax: **0800 066 4471**

Email: **david.corfield@surveyfirst.biz**

Web: **www.surveyfirst.biz**

Survey First Ltd, 4 Langlands, Luncarty, Perthshire PH1 3EX

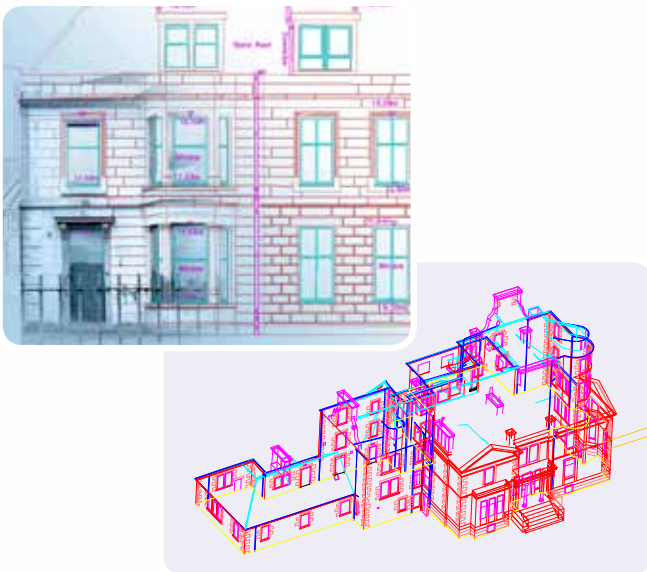
**surveyfirst**

# Measured Building Surveys

Survey First Ltd undertakes a variety of Measured Building Surveys and services to accommodate our expanding list of multi-disciplinary clients. Operating within markets such as Property, Architectural, Engineering, Historic, Local authority and private development clients.

Survey First Ltd uses TheoLT software on Motion LE1700 tablet PCs with final editing in AutoCAD prior to client submission. Our full range of Leica survey equipment is also available for building footprints etc.

All works are undertaken within RICS approved guidelines and our own accredited quality systems.



**Our MBS services include:**

**Floorplans** – to varying scales and detail levels. As-Built plans.

**External/Internal elevations** – from basic planning proposals (extensions/modifications) incorporating PhoToPlan software methods through to high detailed full stonework models for historic record purposes.

**Sections and Roofplans**

**Property measurement** – Net and Gross Internal areas, zoning to approved RICS specifications.

**Building Models** – combining the above services to create an intelligent 3d model which is becoming of more and more benefit to architectural specialists.

**Other services include**, Space planning, life-cycle costing and asset/service registers for **Facility Management** and **Licensing and Fire regulation plans** to ensure legal compliance within current Government guidelines.

**Output** - Digital media output and/or paper plots at any scale. Digital output can be exported to any CAD format i.e AutoCAD, MicroStation, ArchiCad, ADT etc.

For further details contact  
**David Corfield**, Business Development Director

Tel: **01738 829 000**

Fax: **0800 066 4471**

Email: **david.corfield@surveyfirst.biz**

Web: **www.surveyfirst.biz**

Survey First Ltd, 4 Langlands, Luncarty, Perthshire PH1 3EX

**surveyfirst**

# Railway Surveys

**In response to the growing needs of the Railway Network throughout the UK and Ireland for extensive surveying works, Survey First Ltd established a specialised Railway Division.**

Surveyors with extensive railway experience have been recruited to support the Manager and in addition all Survey First survey staff joining the Company are automatically put through a medical, drugs and alcohol testing and PTS (Personal Track Safety) training to ensure the division has back-up from the large resource of surveyors employed by Survey First.

At Survey First the 2 second Leica 1200 Series Total Stations have become the standard tool of the Railway Surveyor, to comply with Network Rails stringent accuracy standards. GPS and Total Stations of varying accuracies are also utilised where appropriate.

**Services offered by the Railway Division include:**

**Major Control Schemes**

**Topographic Surveys**

**Gauging (bridges & platforms)**

**Hallade**

**Track Condition**

**Design – Plain Line**

**S & C and Clearance Analysis**

**Design Checking**



For further details contact  
**David Corfield**, Business Development Director

Tel: **01738 829 000**

Fax: **0800 066 4471**

Email: **david.corfield@surveyfirst.biz**

Web: **www.surveyfirst.biz**

Survey First Ltd, 4 Langlands, Luncarty, Perthshire PH1 3EX

**surveyfirst**

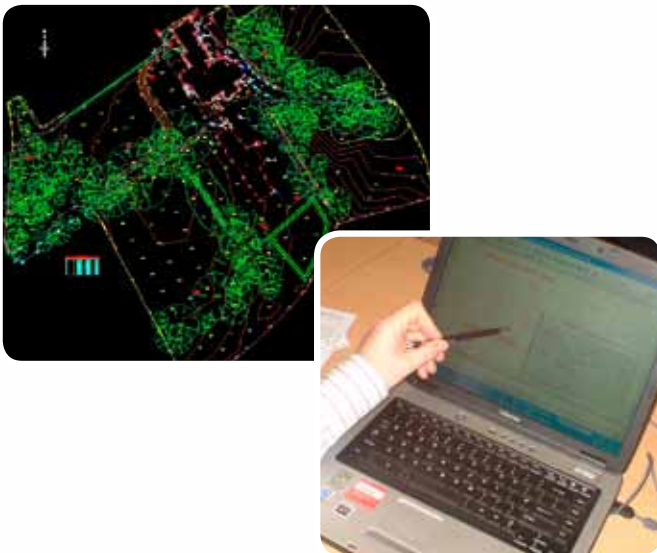
# CAD Services

Survey First undertakes a steady supply of digital works for our partners, internal requirements and external clients providing quality drawing and drafting services to budget and timescale.

We are able to outsource CAD operators for both short & long term contracts. We have undertaken many diverse CAD projects for our list of "blue chip" clients.

Our CAD personnel have extensive experience in both Land and Measured Building Surveys thereby fully understanding the digital datasets they work with.

We pride ourselves on accuracy, consistency, quality and timescale.



**Our CAD services include but are not limited to the following:**

**Data Capture / Vectorisation** – Translation of all types of source drawing to CAD using client specific templates.

**Data Editing** – Client supplied plans that require adjustment to standards for layering, line type etc.

**Data Conversion** - Digital media output to BS drafting standards. Digital output can be exported to any recognised CAD format i.e. AutoCAD, Microstation, ArchiCad, ADT etc.

**Outsourcing** – Our highly trained operators are available for work in-house and on site. We can also supply CAD operators to Project Managers.

**Scanning/Plotting** – Scanning and plotting services to any size or scale.

**Local Planning** - Encapsulation and presentation for local authority planning.

For further details contact  
**David Corfield**, Business Development Director

Tel: **01738 829 000**

Fax: **0800 066 4471**

Email: **david.corfield@surveyfirst.biz**

Web: **www.surveyfirst.biz**

Survey First Ltd, 4 Langlands, Luncarty, Perthshire PH1 3EX

**surveyfirst**

# Specialist Surveys

Survey First prides itself on its ability to undertake a diverse range of projects. This is possible due to our investment in the latest Leica Total Stations, GPS and SmartRover technology and our highly experienced staff.

This means that whatever your requirement may be we can survey it and present it on time/budget to your required standards.

## Our Specialist services include:

**In-shore Hydrographic surveys** – Bathymetric data on rivers and lakes to provide level data for planning, dredging etc.

**Calibration measurement** – high accuracy measurement of equipment and antenna for positional accuracy of calibrated equipment e.g. survey vessel monitoring.

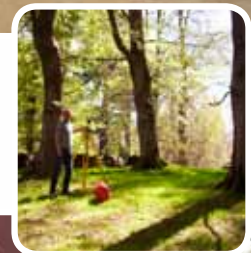
**GPS Control networks** – Cost effective, accurate control solutions for small & large projects and developments. Marker installation and co-ordination using both GPS and traditional techniques.

**Monitoring** – Buildings, structures and level monitoring works undertaken.

**Underground Services tracing** – Accurate, safe and non-intrusive surveying to collate current underground service records.

**High resolution digital photography** – used for photogrammetric digital data capture and for record purposes.

**Publicity Images** – high quality digital imaging used in reports for technical assessment of historic buildings and for publicity brochures etc.



For further details contact  
**David Corfield**, Business Development Director

Tel: **01738 829 000**

Fax: **0800 066 4471**

Email: **david.corfield@surveyfirst.biz**

Web: **www.surveyfirst.biz**

Survey First Ltd, 4 Langlands, Luncarty, Perthshire PH1 3EX

**surveyfirst**

# Partner Services

**The Directors of Survey First are committed to co-operation with like minded organisations with a view to being able to supply its customers a seamless product and services additional to those being supplied direct.**

Survey First has invested extensively in the latest capital equipment for the Topographic and Measured Building Survey market. Through its partner organisations it is able to offer a much wider selection of products and services.

**Additional services that can now be supplied include:**

**Aerial and Terrestrial Photography**

**Photogrammetric Data Capture**

**Close Range Photogrammetry**

**3D Laser Scanning**

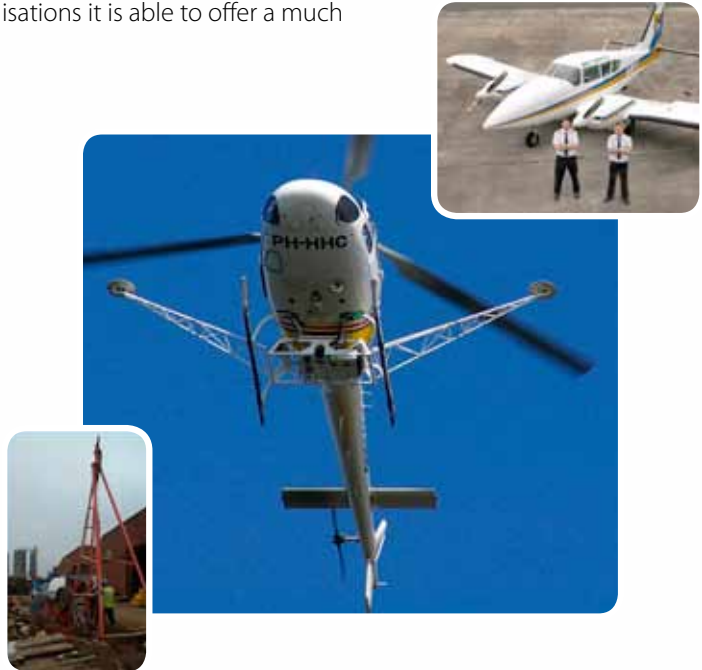
**Airborne Laser Scanning**

**FLI-Map**

**Engineering Consultancy**

**Environmental Services**

**High Resolution Digital Photography**



Survey First now supply the full range of services from site investigation, underground services surveys and topographic surveys which together with Deed Plan production and setting out services cover the full range of services required for the development of a new site from acquisition to the construction phase.

Let Survey First become your "One Stop Shop" rather than having to put out many separate contracts to source all of the services.

How does one become a partner organisation?, we work on an open policy of trust between quality suppliers, there are no formal contracts or exclusivity agreements, just a desire to succeed, enhance each organisation involved and to be able to work in an environment of trust and mutual respect.

If you are not sure if we can supply a specific service, please ask us!

For further details contact  
**David Corfield**, Business Development Director

Tel: **01738 829 000**

Fax: **0800 066 4471**

Email: **david.corfield@surveyfirst.biz**

Web: **www.surveyfirst.biz**

Survey First Ltd, 4 Langlands, Luncarty, Perthshire PH1 3EX

**surveyfirst**

# Underground Utility Mapping

**Survey First is able to locate underground utility services and supply this as 2D or 3D data overlaid onto base mapping. This is undertaken with a combination of Radiodetection & Ground Penetrating Radar (GPR) equipment.**

Service avoidance using this data is a must for piling, ground investigation, building contractors & facilities/property managers. Projects can often outlast paint marks on the ground and continual development of a site may require repeated indepth knowledge when considering extensions or new build.

Full 3D modelling of a project allows a contractor to use trenchless technology to install new services whilst avoiding existing services with significant cost savings over conventional trenching.

**Site survey prior to excavations**

**As-built Utility survey**

**Brownfield site investigation**

**Boreholes/Trial Pit/Major Control Locations (CAT)**

**Forensic Investigation**

**Archeological**

The RICS specification will help you to meet your exact requirements.

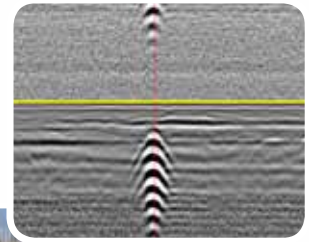
GPR is an echo sounding method where a transmitter/receiver is passed over the ground under investigation. It is effective at mapping metallic and non metallic services. A comprehensive image of the sub surface including service depths, trench compaction and pavement construction thickness is provided.

GPR does NOT trace services, but indicates the presence of voids, disturbed ground, trenches, pipes and cables under the surface. NB: GPR does not identify a particular service, only the likely location of a pipe or cable, and is best used in conjunction with radiodetection where possible.

**Health & Safety:** The tracing of Underground Services can be a dangerous occupation. For this reason safety measures have to be established in order to protect staff and clients' interest.

**Confined Spaces:** No member of Survey First staff is allowed in confined spaces above one metre deep unless certificated to do so, and only then if all correct safety measures are in place. This often requires additional staffing in order to facilitate the correct escape procedures from confined spaces.

*We have staff who have been certified to medium risk in confined spaces.*



For further details contact  
**David Corfield**, Business Development Director

Tel: **01738 829 000**

Fax: **0800 066 4471**

Email: **david.corfield@surveyfirst.biz**

Web: **www.surveyfirst.biz**

Survey First Ltd, 4 Langlands, Luncarty, Perthshire PH1 3EX

**surveyfirst**

# Extract Clients List

**Arup**

**Atkins Group**

**Balfour Beatty Rail**

**Bielski Associates**

**Bracewell Stirling Architects**

**CDA – Comprehensive Design Architects**

**Colliers CRE**

**ConstructPro**

**Dundee University**

**Fugro-BKS Surveys Limited**

**Grontmij (Carl Bro) Group**

**Hackland Dore**

**Halcrow Yolles**

**Interlink M74 JV**

**Ironside Farrar**

**Jacobs UK**

**Laing O'Rourke**

**Land Securities**

**Montgomery Forgan**

**Mott MacDonald**

**Muirfield Contracts**

**North Lanarkshire Council**

**RGP Architects**

**RMJM Architects**

**Royal Botanic Gardens**

**Scott Wilson Railways**

**Scottish Police Services Authority**

**Sir Frederick Snow & Partners**

**St. Andrews University**

**W. A. Fairhurst & Partners**

**Watson Burnett Architects**

**Watts Group PLC**

**Woolgar Hunter**

**WSP Group Limited**

**WYG Engineering Ltd**

For further details contact  
**David Corfield**, Business Development Director

Tel: **01738 829 000**

Fax: **0800 066 4471**

Email: **david.corfield@surveyfirst.biz**

Web: **www.surveyfirst.biz**

Survey First Ltd, 4 Langlands, Luncarty, Perthshire PH1 3EX

**surveyfirst**